



## HAI\*QPM

### Customers

Pepsico

Quaker Oats

Yakult

Delicia

Van Houtum Paper

Aviko

Rixona

Elopak

Elocoat

Sonneveld Bakery Ingr.

Orla Foods

IFFCO

**HAI**, based in The Netherlands, is a leading provider of Cloud Computing Software for Real-Time Enterprise Manufacturing Intelligence (EMI).

The HAI\*QPM software is used by manufacturers worldwide to achieve Operational Excellence through Continuous Improvement, 6Sigma, Lean Manufacturing and TPM initiatives.

Real-time visibility into the plant floor has become vital to ensure an effective, timely response to manufacturing deviations. Therefore real-time Monitoring and Analyses of Manufacturing data and Quality data is essential in today's business environment.

Thanks to production & quality performance analysis companies gain better control over profitable areas and identify new sources of opportunities for improved productivity and quality.

HAI offers a complete set of solutions to help manufacturers achieve and sustain an increased level of performance.

### HAI\*QPM

HAI\*QPM is a unique Quality and Production Information System bridging the real-time information gap between ERP and MES systems. It can be configured to record manually all types of quality and production information, and in addition be interfaced to

- historians, processing equipment and testing devices &
- MES-, LIMS- & ERP-systems

Webbased HAI\*QPM is available as a hybrid solution:

- as a Service (SaaS) from the central HAI\*QPM data-centre offering a ready-to-use HAI\*QPM platform within minutes and without local IT efforts (public cloud)
- from a single installation within the customer's firewall, making it directly available for all production facilities (private cloud)
- or, alternatively, installed locally at manufacturing sites (traditional solution)

### World Class Manufacturers implement HAI\*QPM because of:

- paperless plant & paperless lab objectives
- the short term benefits of valuable real-time information on process, production & quality
- supporting TPM and other improvement initiatives
- the short implementation period & simplicity in use and maintenance
- technology: cloud computing benefits (public or private cloud) (webbased, multitenancy)
- SAP Netweaver platform, as part of their SAP strategy
- IT-architecture fit
- subscription based price model

### MAKING DATA WORK

### ARC Advisory Group – December 2011

Because most organizations seem to be drowning in data but starving for information, there is a growing need for enterprise manufacturing intelligence software, which can drive more informed decisions. Manufacturing efficiency becomes more strategic to organizations looking to improve their productivity and bottom line.

“Manufacturers want easy-to-use tools with consistent visualization that enable collaboration ‘at a glance,’ improve knowledge in real-time, improve decisions and responses, and are easy to use and deploy,” said Janice Abel, the principal author of the ARC study.

### HAI\* QPM (Quality & Production Management)

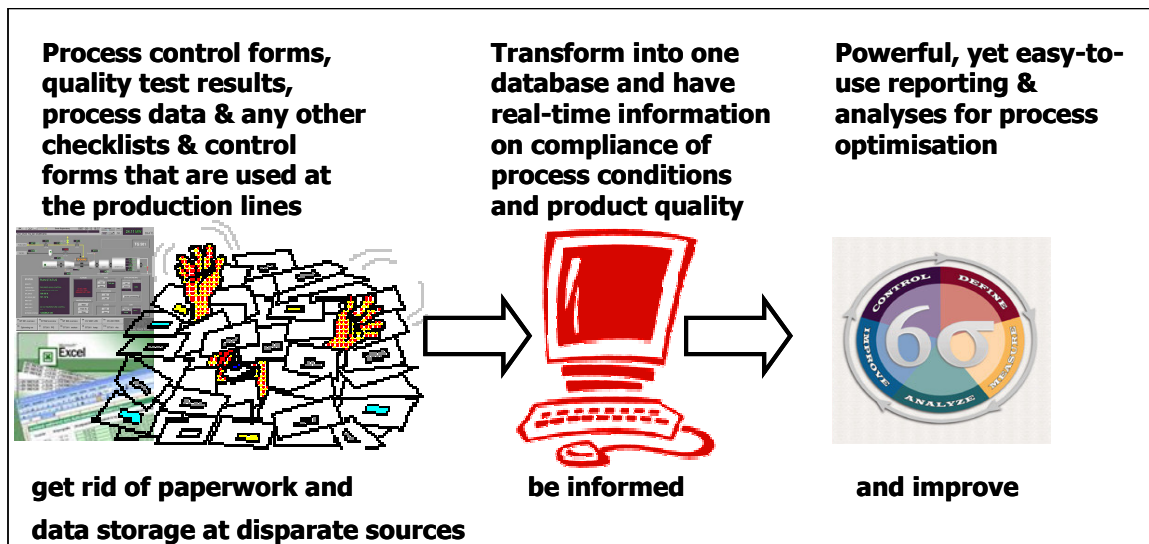
QPM is an off the shelf software package for data collection, real-time non-conformance presentation of quality- and production-data, and analysis/reporting of production performance, process conditions, and quality performance.

This enables companies to eliminate an extensive amount of paperwork and Excel files at the production lines (paperless plant), to have full tracking and tracing, and to optimise real-time non-conformance information to production management, operators and quality engineers.

With HAI\*QPM the plant data are collected and analysed to support real-time decision making, and presented in a simple, yet very effective way enabling people to respond in time and take corrective action.

The HAI\*QPM statistics and analytics are powerful, yet easy to use and allow the user to find the causes of process deviations, take corrective actions, monitor improvements, save costs and improve production performance.

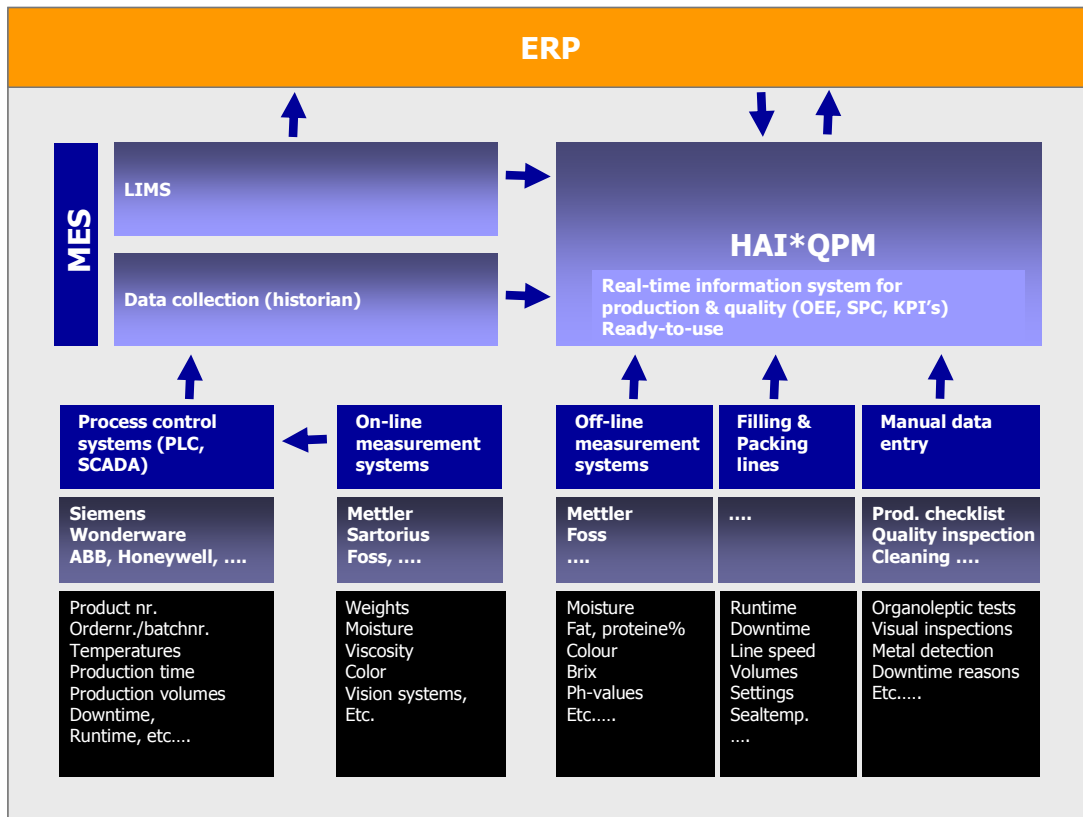
### Collect, Visualize & Optimize Production & Quality Information



### Data collection

Within HAI\*QPM all types of process and quality data can be collected automatically through real-time interfacing with process equipment, testing equipment, and other databases. In addition, data can be entered manually by operators and quality control staff.

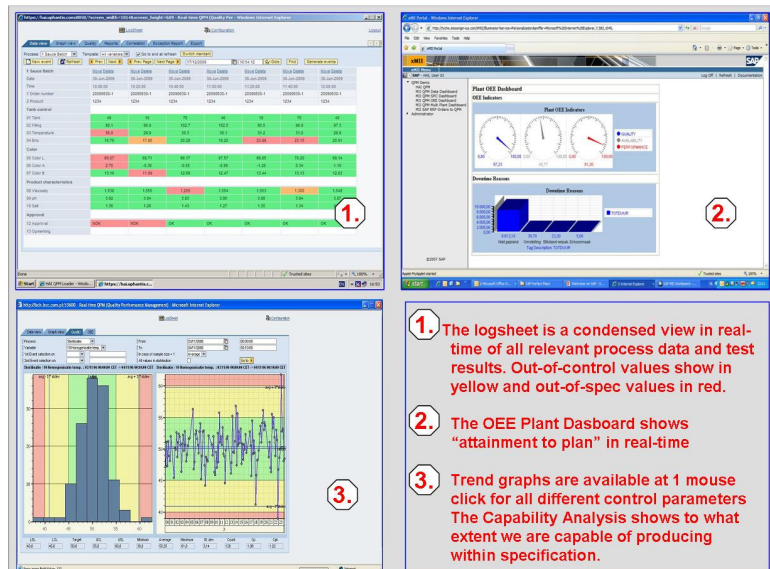
MAKING DATA WORK



All product quality test results, process parameters and production data are matched against their specifications and will show green, yellow or red indicating whether the values are within or out of spec.

For all process parameters and product quality test results, specification values and control values can be defined.

Based on the actual values, HAI\*QPM calculates the relevant statistics, like trend charts, capability analysis, and the optimum control values.



Real-time non-conformance screens support the organisation in focusing on the right things at the right time. Valuable statistics are readily available to support production and quality personnel in improving performance and achieving operational excellence.

### MAKING DATA WORK